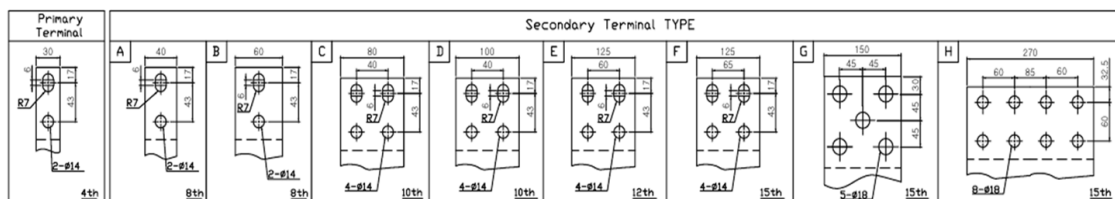
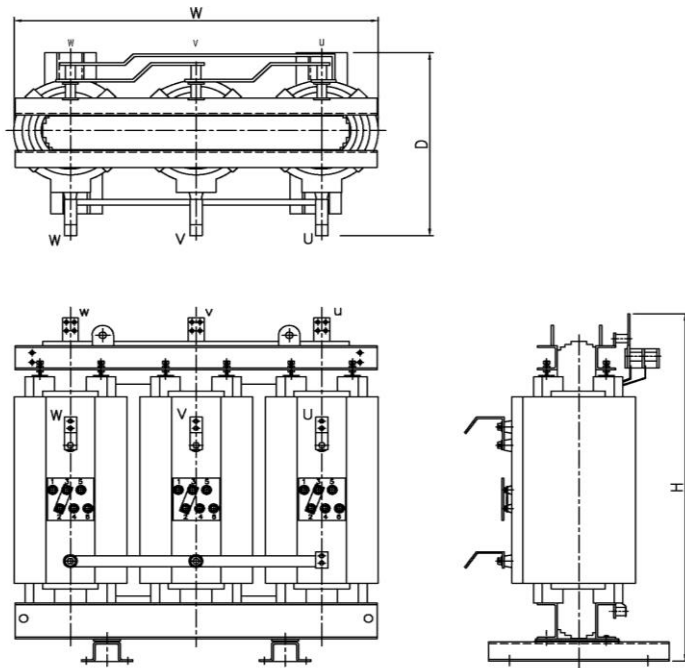


(For solar power, two windings)



3P 22.9kV/380V, YNd1

of 22:3KV300V, IND

Capacity		% IZ	Efficiency (Load Rate)		No load current	Voltage fluctuation rate		External dimensions(mm)			Weight	LV terminal	
(kVA)	(%)	50%	100%	(%)	(%)	W	D	H	(KG)	T * W	Type		
200	6.5	98.30	97.8	3.0	2.0	1215	765	1255	850	8t*40	A		
300	7.0	98.50	98.0	2.0	1.9	1230	770	1410	1050	8t*40	A		
400	6.5	98.60	98.2	1.5	1.8	1285	780	1435	1200	8t*40	A		
500	6.0	98.80	98.3	1.5	1.5	1395	840	1500	1500	8t*60	B		
600	6.5	98.80	98.4	1.5	1.5	1450	850	1505	1650	10t*100	D		
750	7.0	98.90	98.5	1.5	1.4	1450	850	1545	1900	10t*100	D		
900	6.5	99.00	98.6	1.5	1.3	1545	865	1650	2250	10t*100	D		
1000	7.0	99.00	98.6	1.5	1.3	1565	930	1645	2300	12t*125	E		
1100	7.0	99.00	98.7	1.5	1.3	1595	935	1665	2500	12t*125	E		
1250	7.0	99.00	98.8	1.5	1.2	1625	940	1730	2800	12t*125	E		
1500	7.0	99.10	98.8	1.5	1.2	1725	960	1750	3200	15t*125	F		
2000	7.0	99.10	98.8	1.5	1.2	1960	960	1960	4300	15t*150	G		

* The above excess capacity and unwritten SPEC. can also be manufactured by order.